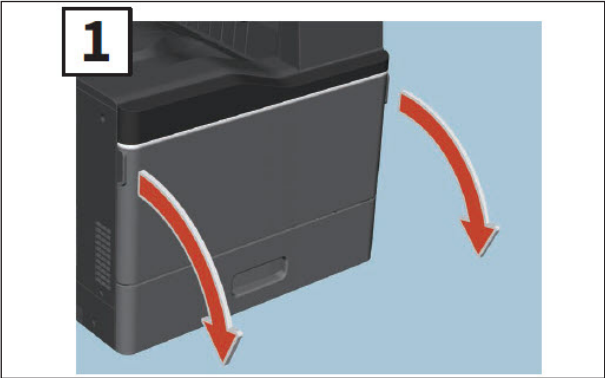
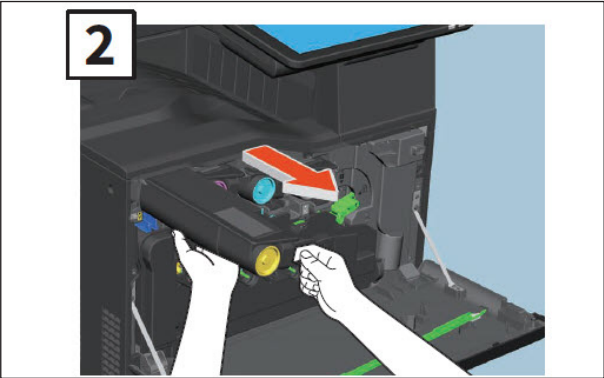


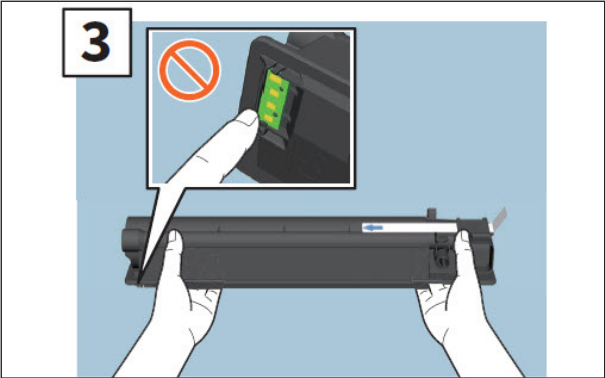
Replacing Toner Cartridge



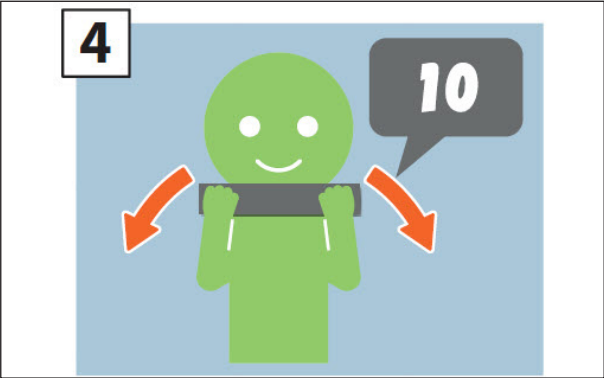
1 | Open the front cover.



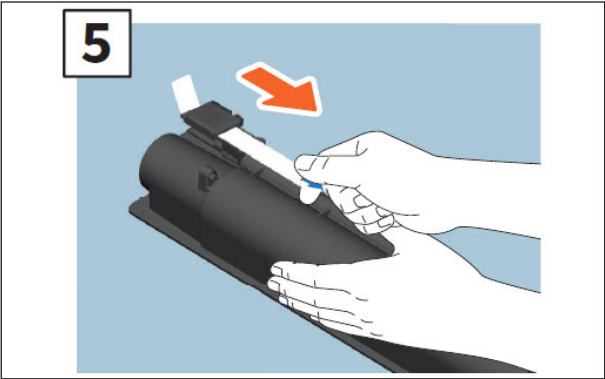
2 | Remove the toner cartridge.



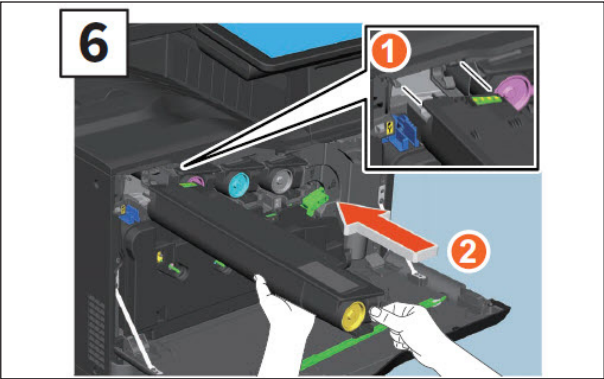
3 | Hold the new toner cartridge with its seal side up.



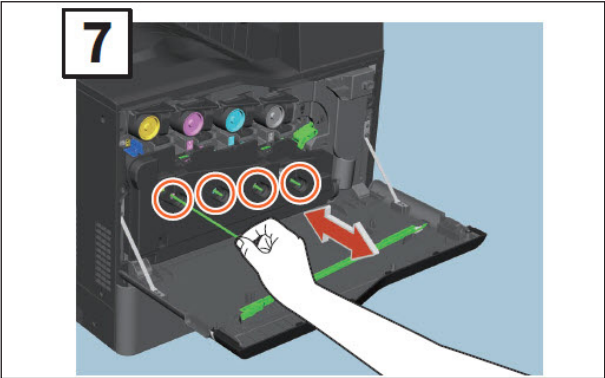
4 | Shake the new toner cartridge strongly with the seal side up.



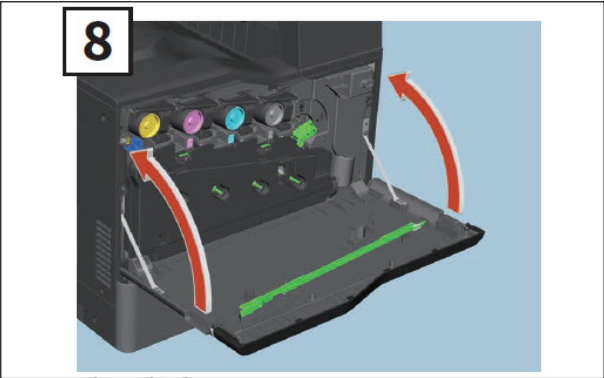
5 | Pull off the seal.



6 | Align the new toner cartridge to the guide. Insert it up to the black line.

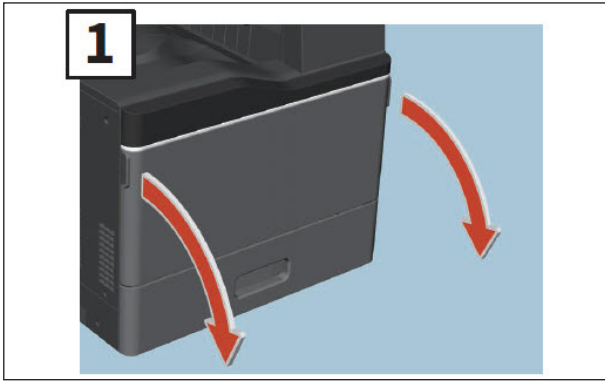


7 | Pull out the cleaner until it stops and then return it. Repeat this 3 times for each of the 4 colours.

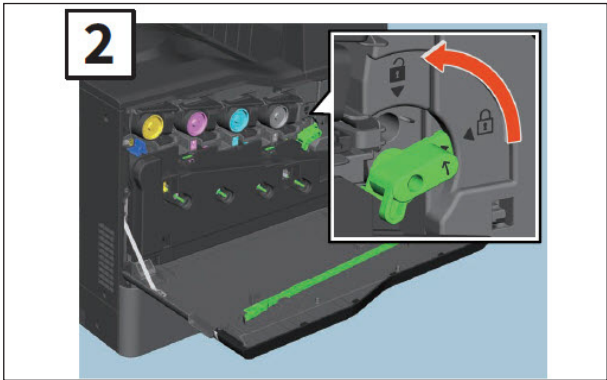


8 | Close the front cover.

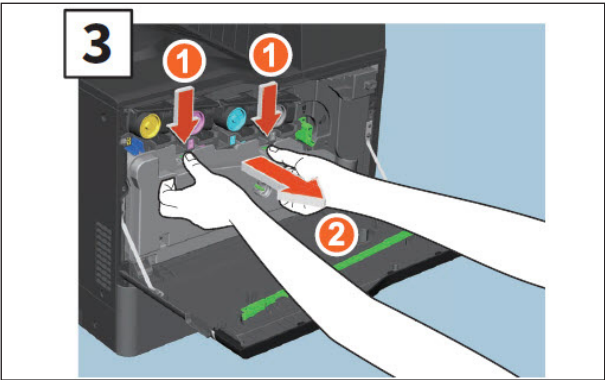
Replacing Waste Toner Box



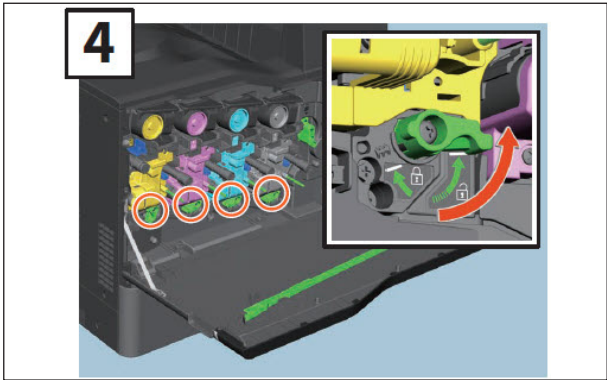
1 | Open the front cover.



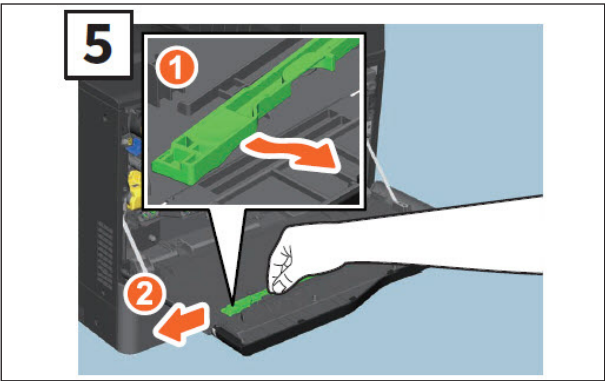
2 | Turn the green lever to the unlock position.



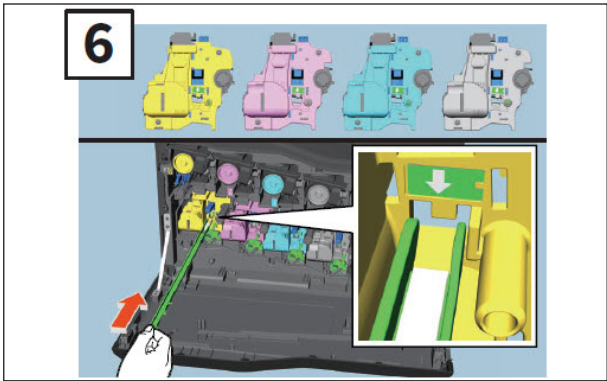
3 | Take out the waste toner box straight toward you pushing down the top latch. Put the used waster toner box in the plastic bag the new one was contained in and seal it with adhesive tape.



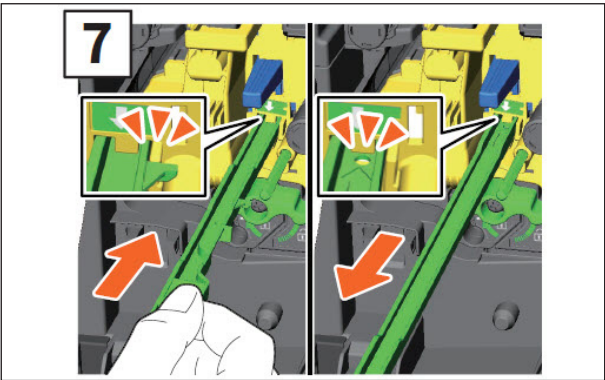
4 | Turn the 4 green levers to the lock position.



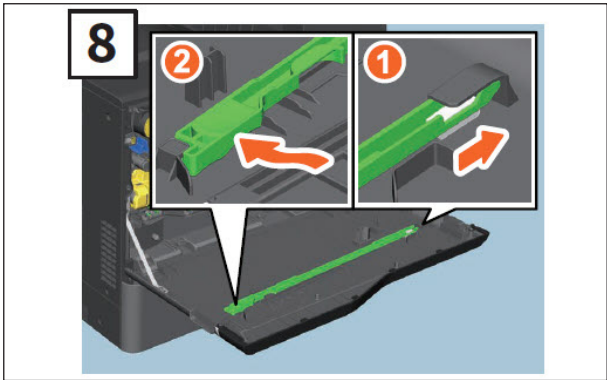
5 | Take out the green cleaner inside the cover.



6 | Insert the cleaner through the service hole of the developer under the arrow to the end.



7 | Pull the cleaner back out until the round hole appears. Repeat this 3 times for each of the 4 colours.

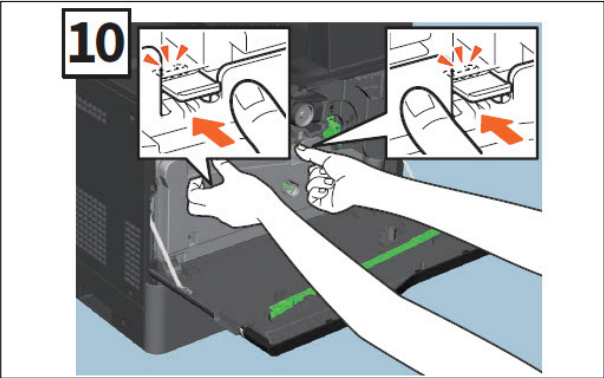


8 | Attach the cleaner with its top on the right and its holding side on the left.

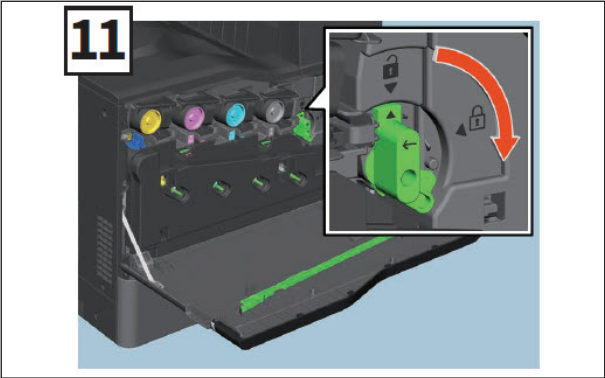
Replacing Waste Toner Box



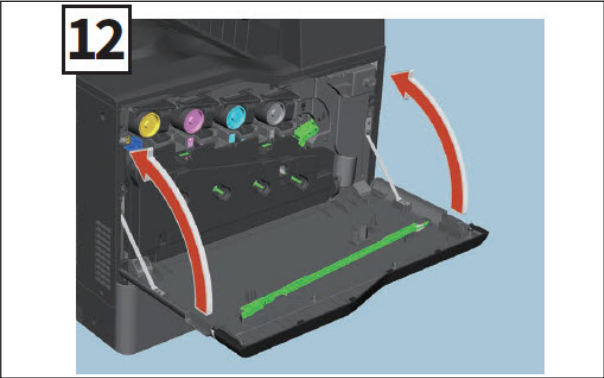
9 | Turn the 4 green levers to the lock position.



10 | Push the waste toner box securely until the upper latches click taking care not to tilt it.



11 | Turn the green lever to the lock position.



12 | Close the front cover.