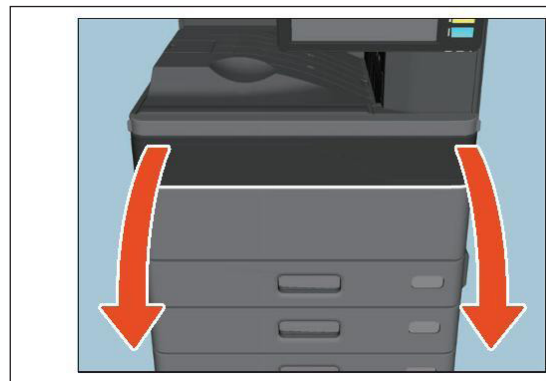
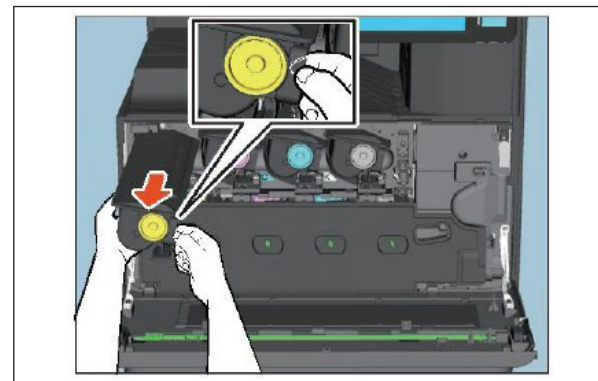


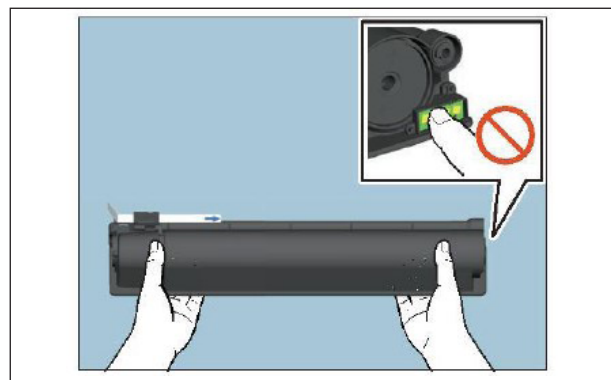
Replacing a Toner Cartridge



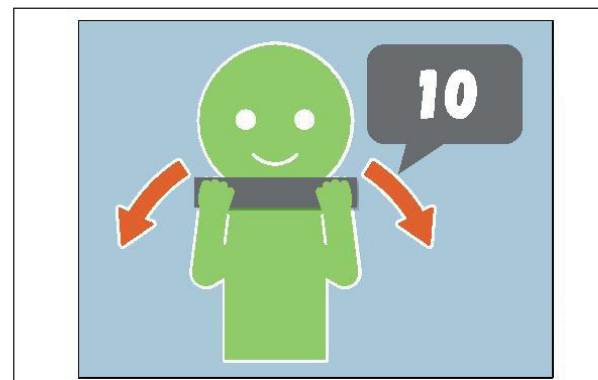
1 | Open the front cover.



2 | Put your fingers on the right side of the toner cartridge and remove it, supporting with your left hand.



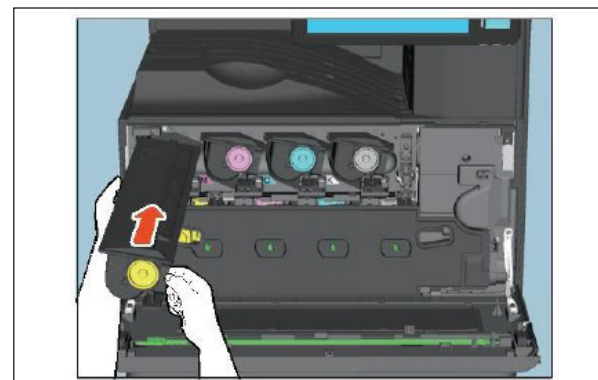
3 | Hold the new toner cartridge with its seal side up.



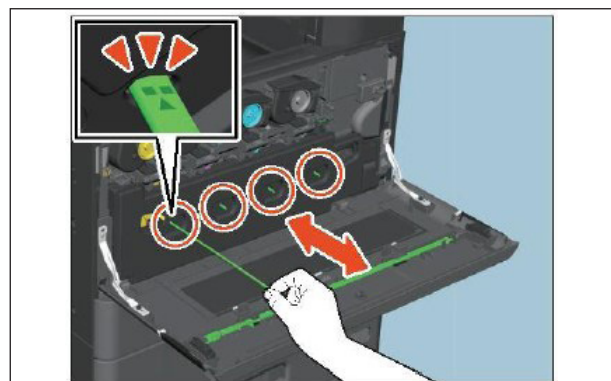
4 | Shake the new toner cartridge strongly with the seal side up to loosen the toner inside.



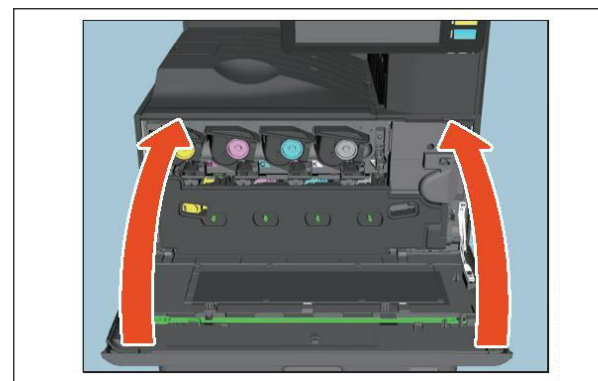
5 | Pull the seal straight out in the direction of the arrow.



6 | Insert the new toner cartridge, aligning it to the guide - insert it up to the black line.

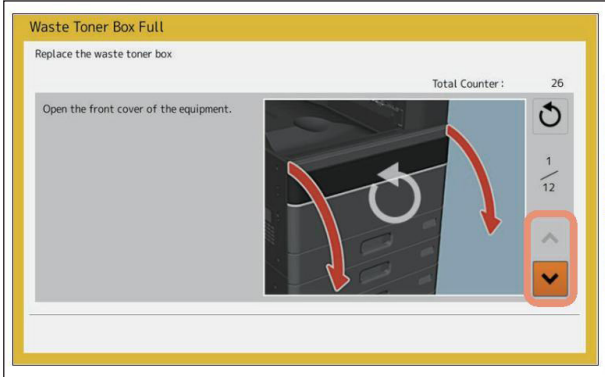


7 | Pull out the cleaner until the mark appears, then return it. Repeat 3 times for each toner cartridge.

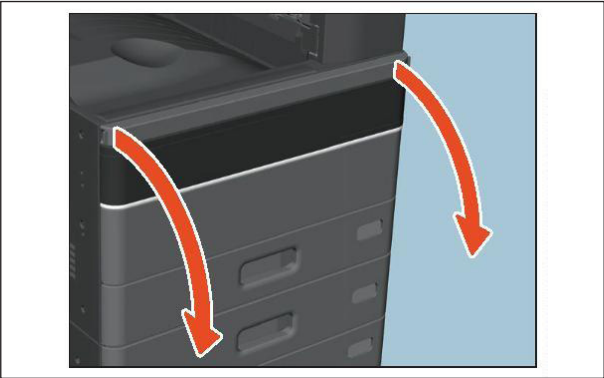


8 | Close the front cover pressing both edges.

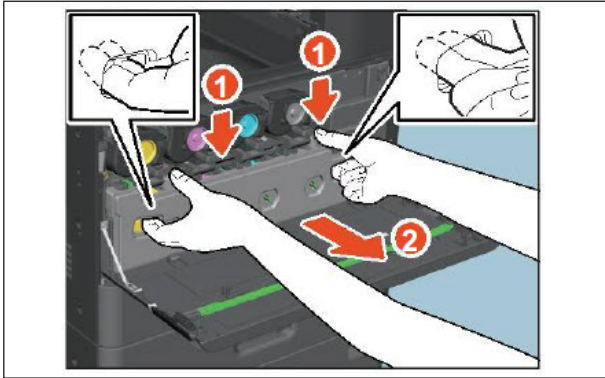
Replacing the Waste Toner Box



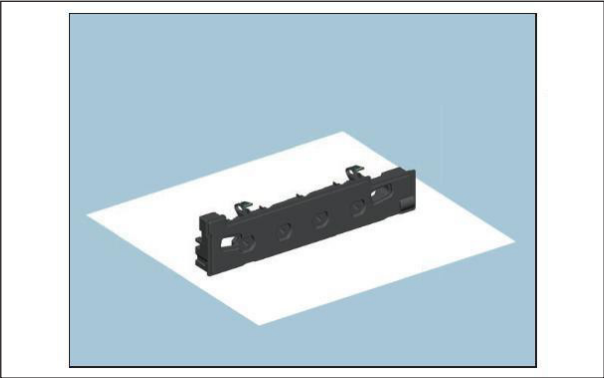
1 | When the waste toner box becomes full, the symbol for replacement of the waste toner box blinks and the message “Dispose of used toner” appears.



2 | Open the front cover.

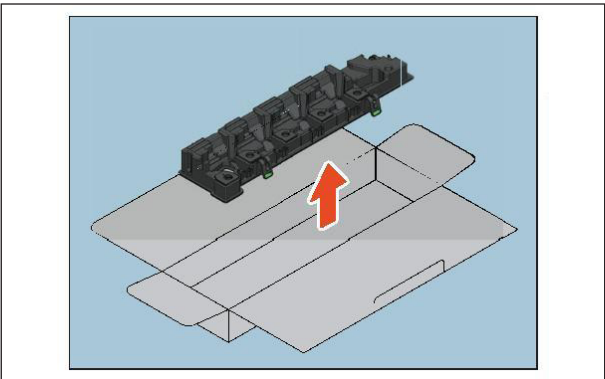


3 | Put your fingers in the waste toner box front grooves and take it out toward you pushing down the top latch.

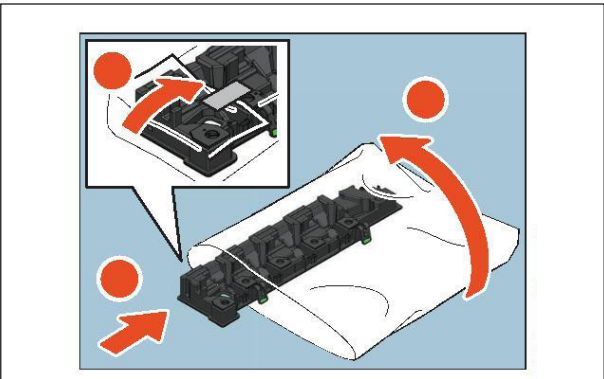


4 | Placing the waste toner box on a large sheet so as not to dirty the surface.

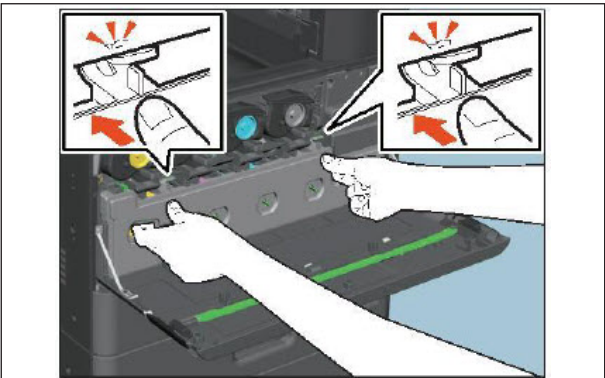
Note: Do not place the waste toner box with its toner collecting holes face down as the waste toner may spill out.



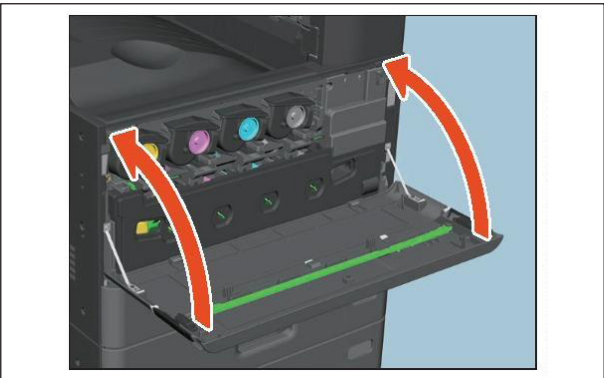
5 | Remove the new waste toner box from the carton.



6 | Put the used waste toner box in the plastic bag and seal it with adhesive tape.



7 | Push the new waste toner box securely until the upper latches click.



8 | Close the front cover by pressing both edges.